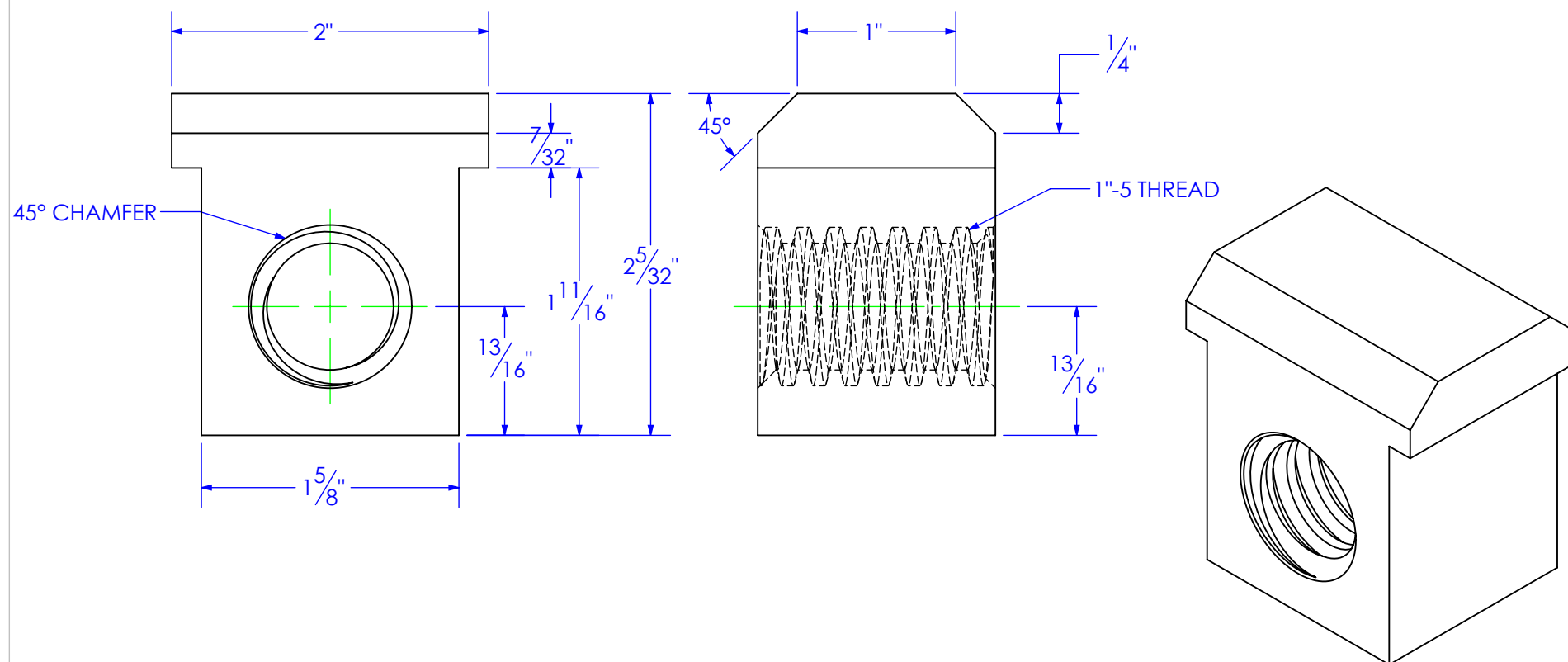


| PART NUMBER                       | DESCRIPTION                  | MATERIAL |
|-----------------------------------|------------------------------|----------|
| BO-1-5 THREAD<br>FLANGED ACME NUT | 1"-5 THREAD FLANGED ACME NUT | BRASS    |

| REVISIONS |                 |            |          |
|-----------|-----------------|------------|----------|
| REV.      | DESCRIPTION     | DATE       | APPROVED |
| A         | INITIAL RELEASE | 10/12/2017 |          |
| B         | REVISE THREADS  | 1/29/2018  |          |
| C         | ADD CHAMFER     | 2/22/2018  |          |



**PROPRIETARY AND CONFIDENTIAL**  
THE INFORMATION CONTAINED IN THIS  
DRAWING IS THE SOLE PROPERTY OF TRIPLE  
C INC. ANY REPRODUCTION IN PART OR  
AS A WHOLE WITHOUT THE WRITTEN  
PERMISSION OF TRIPLE C, INC IS PROHIBITED.

UNLESS OTHERWISE SPECIFIED:  
DIMENSIONS ARE IN INCHES  
TOLERANCES:  
FRACTIONAL  $\pm 1/16$   
ANGULAR: MACH  $\pm 1$  BEND  $\pm$   
TWO PLACE DECIMAL  $\pm 010$   
THREE PLACE DECIMAL  $\pm 005$

MATERIAL BRASS  
DO NOT SCALE DRAWING

|                                |                 |           |
|--------------------------------|-----------------|-----------|
|                                | NAME            | DATE      |
| DRAWN                          | ETHAN           | 2/22/2018 |
| PART #                         | BO-1-5 ACME NUT |           |
| ASM #                          | Asm #           |           |
| COMMENTS:                      |                 |           |
| NUT, ACME 1"-5<br>THREAD BRASS |                 |           |

P.O. BOX 248, SABETHA, KS 66534  
(785) 284-3674 FAX (785) 284-3931



|            |              |              |
|------------|--------------|--------------|
| SIZE       | DWG. NO.     | REV          |
| A          | 12-2448      | C            |
| SCALE: 1:1 | WEIGHT: 1.36 | SHEET 1 OF 1 |